

State Issues and Accreditation

Sally Johnstone, President, NCHEMS

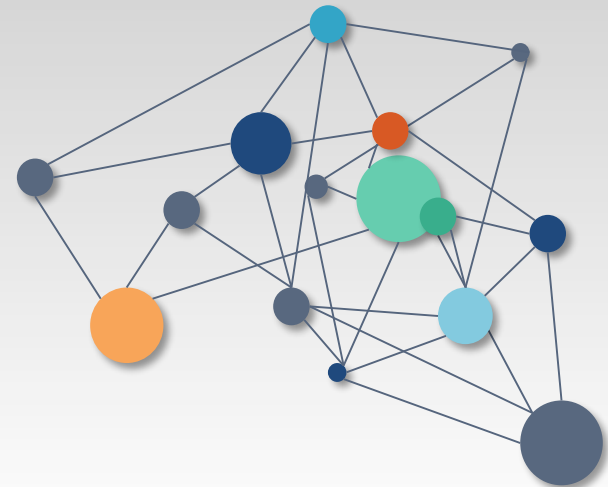
Karen Whitney, Interim Chancellor, PA State System of Higher Education



National Center for Higher Education
Management Systems

nchems.org • higheredinfo.org

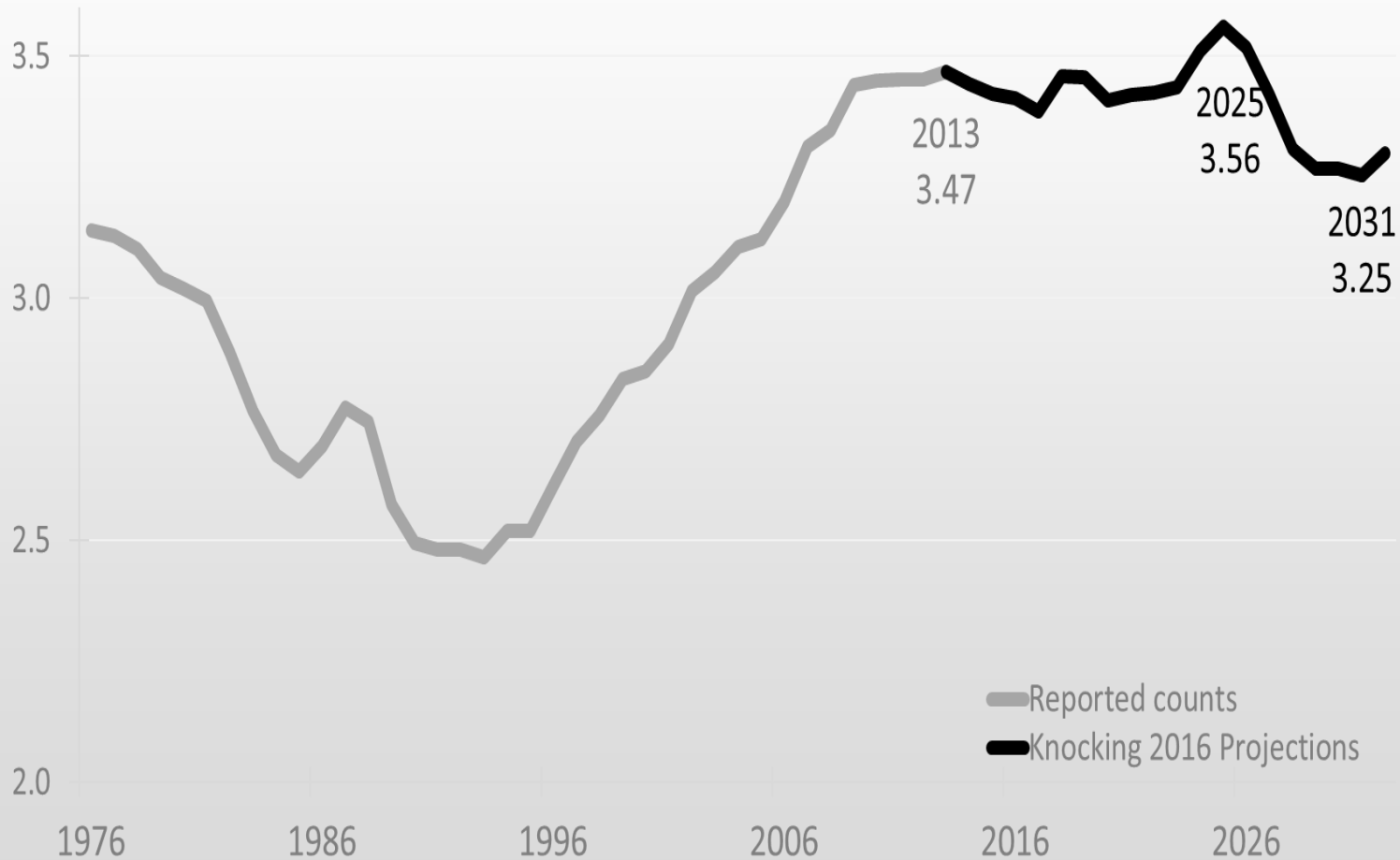
CHEA
Washington, DC
31 January 2018



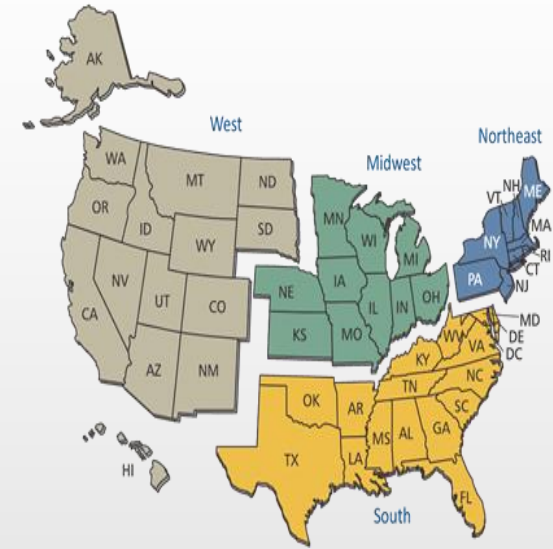
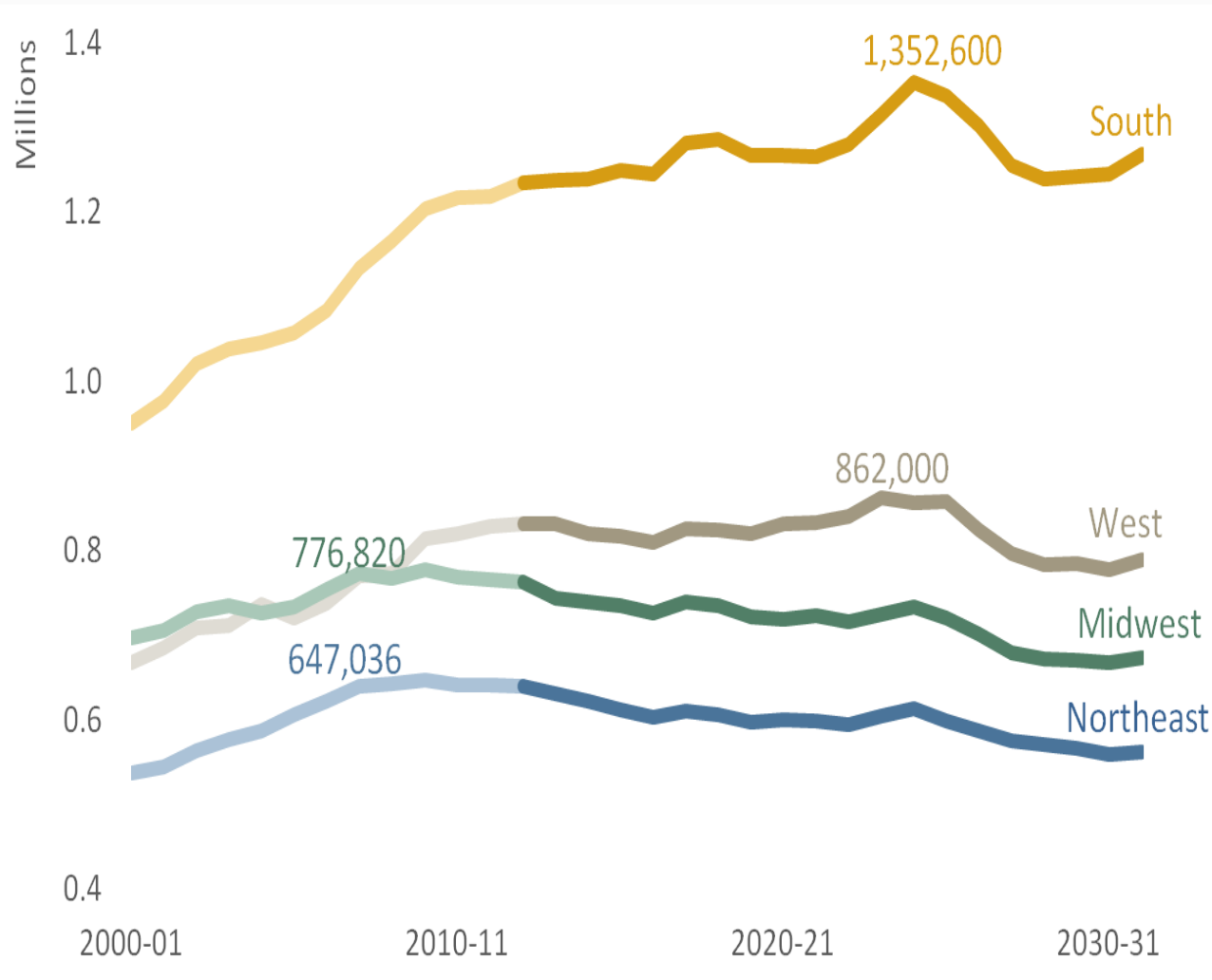
Slowdown in HS Graduates

WICHES' Knocking at the College Door

Total U.S. Public & Nonpublic Graduates (*Millions*)

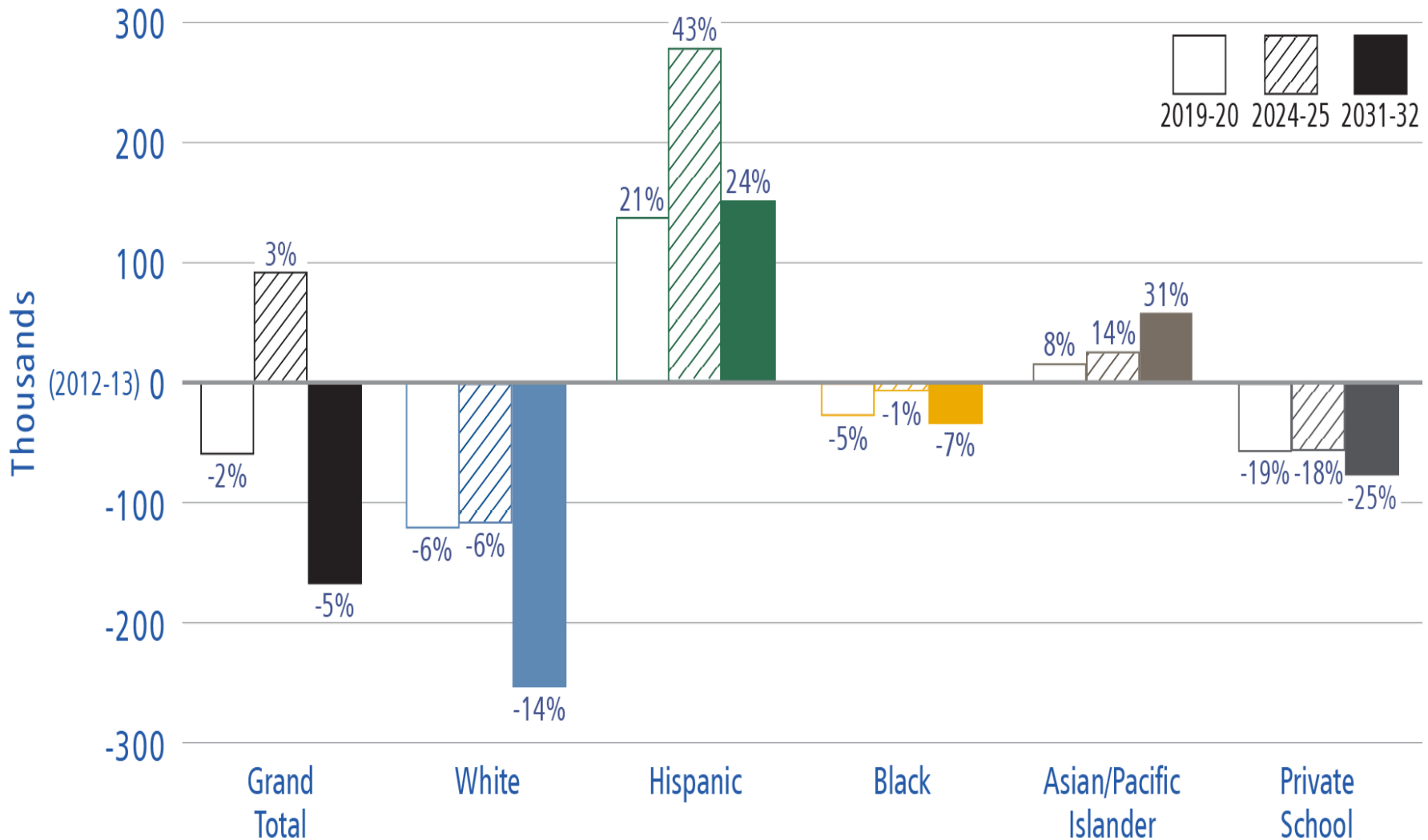


Regional Variation



Fewer White Grads; More Non-White Grads

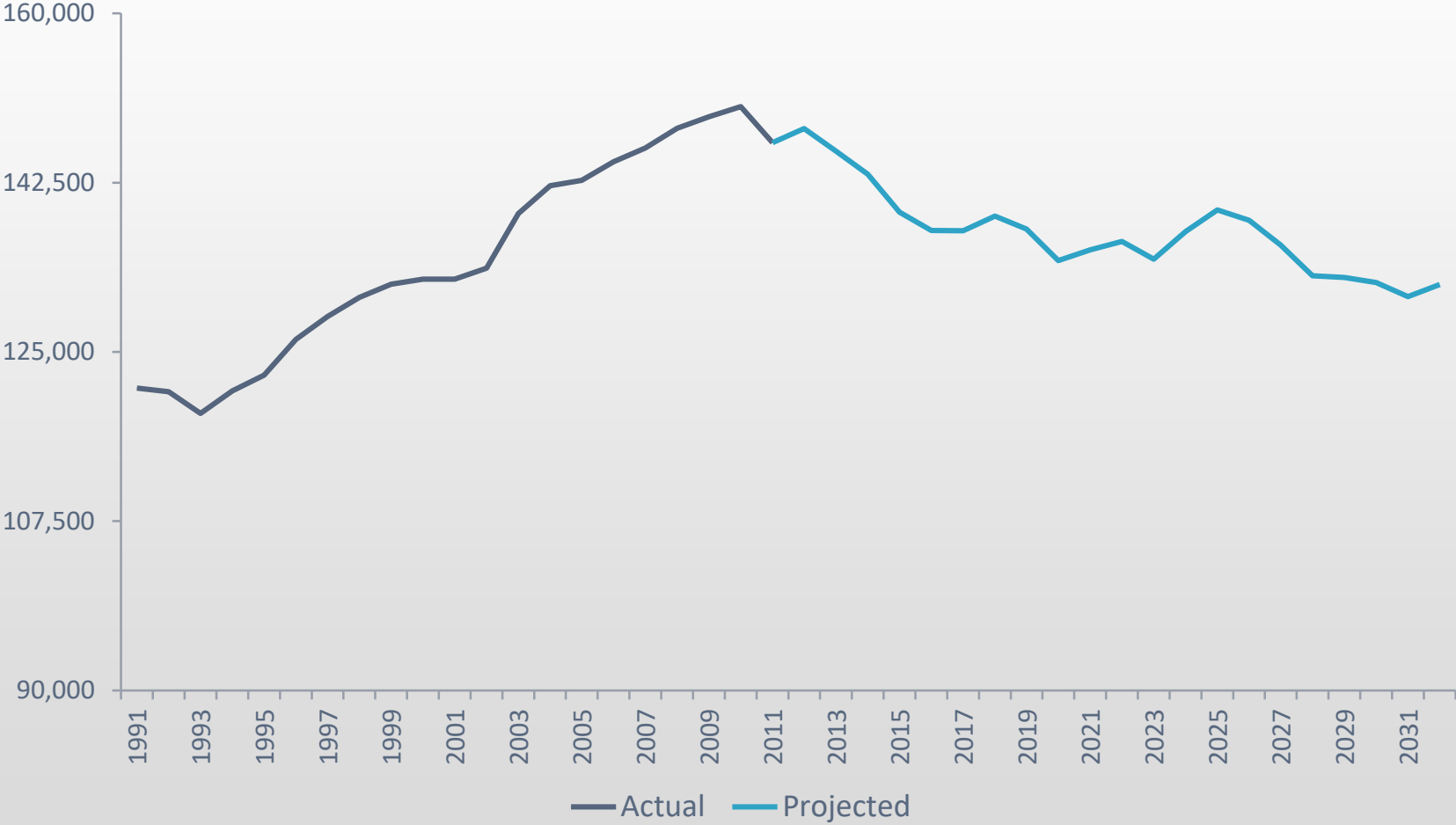
U.S. Graduates,
Compared to 2012-13



NCHEMS Evaluation

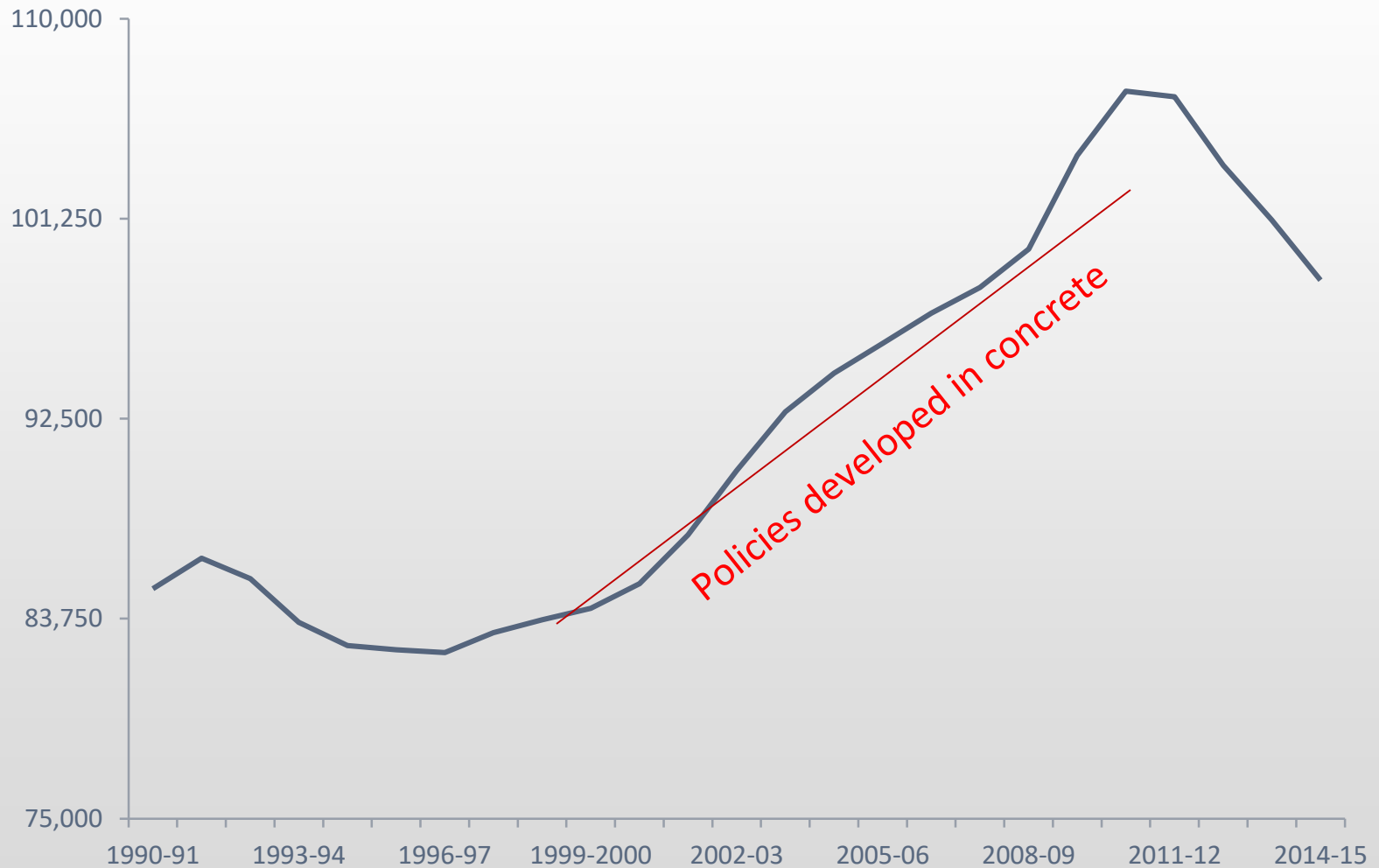
PASSHE & POSTSECONDARY EDUCATION IN PENNSYLVANIA

Actual and Projected High School Graduates in Pennsylvania

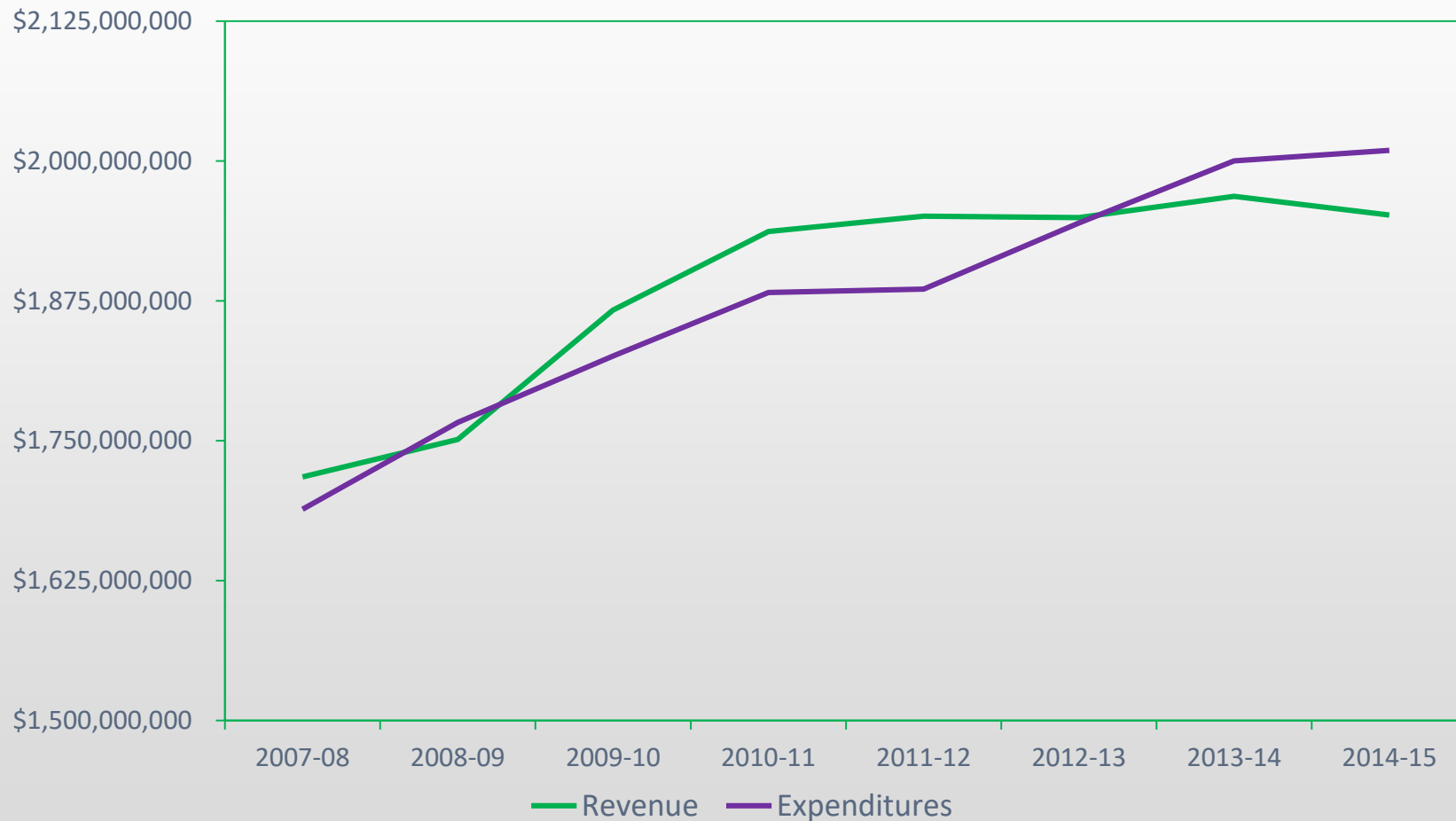


Source: WICHE, *Knocking at the College Door*.

FTE Enrollment at PASSHE Institutions, 1990-2015



Revenue and Expenditures for PASSHE Institutions, 2007-08 to 2014-15



PASSHE:Review.Redesign.Resilience. (PASSHE.EDU)

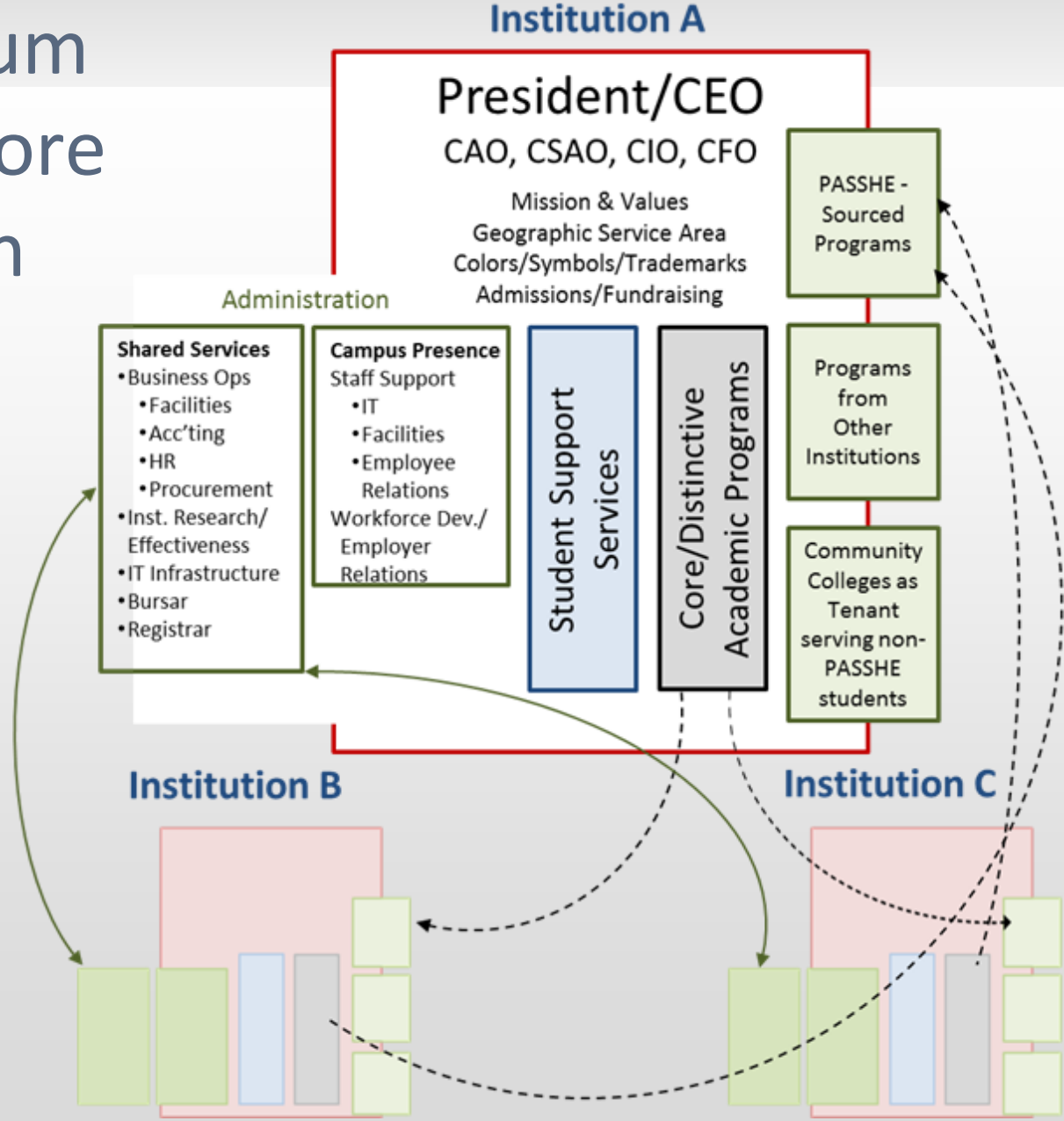
- Conducted a deep brutally honest unbundling of the System Review Report recommendations with high impact stakeholders. (August-September)
- Board issued a resolution affirming the commitment to all 14 universities and established 3 overarching priorities intended to unite the universities as a system. (October)
- Created a systemic redesign framework designed to achieve the system priorities informed by the review recommendations.(November)
- Redesigning. (Now and for quite some time.)

A Recommendation: Retain historic missions to serve students and communities (working class population)

Allow institutions to leverage system-wide and regional resources to deliver academic programming and share administrative functions more efficiently:

- Capacity and incentives to bring programs from other providers to meet local needs and student demand
- Local student support services to foster student success

A Consortium Model – more radical than closure or mergers



PASSHE:Review.Redesign.Resilience.

(PASSHE.EDU) Implications For Accreditation

1)Cheyney University & Accreditation –

* University-System Relationship &
The “Corporate Connection”

2)Imagine a **consortium organizational culture** of intentional leveraging the academic enterprise.

Discussion

- What do these sorts of crises mean for accreditors?
- Are there ways system offices and accreditors should be working together differently?
- Is the future for public colleges and universities in systems the IVY Tech approach?

Contact Info



National Center for Higher Education Management Systems

303-497-0301

sally@nchems.org

Karen M. Whitney

717-720-4010

kwhitney@passhe.edu (summer 2018)

karenwhitney.highered@gmail.com